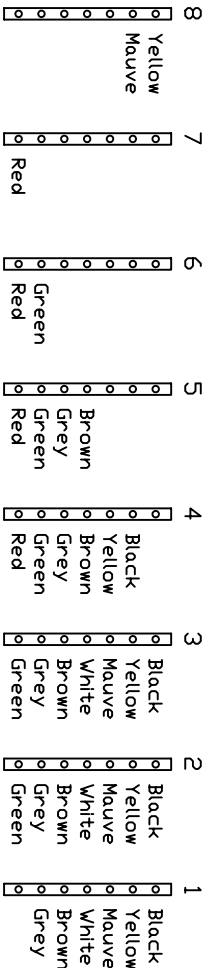


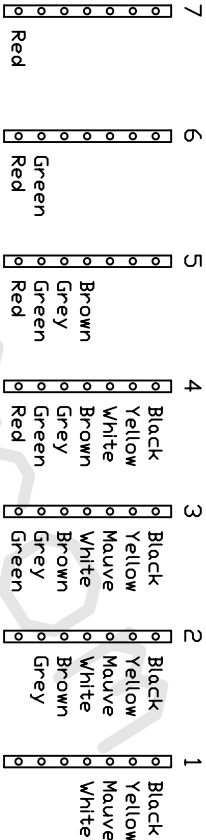
Notes: C

(Biscuits 78 to 85)



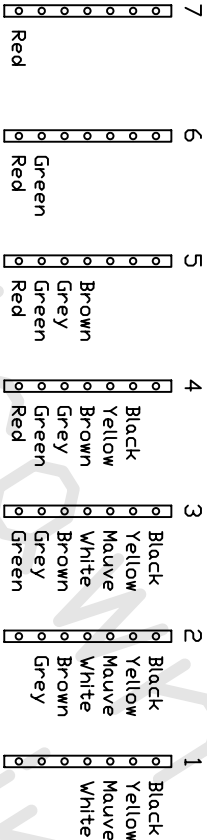
Notes: E, F, F#

(Biscuits 36 to 56)



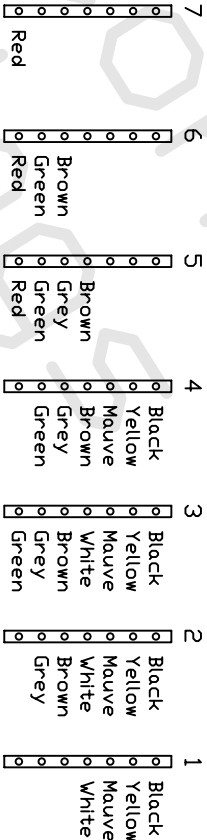
Notes: C#, D, D#

(Biscuits 57 to 77)



Notes: G

(Biscuits 29 to 35)

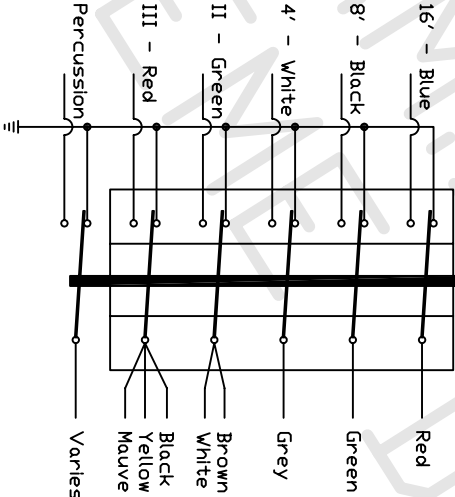


Note:

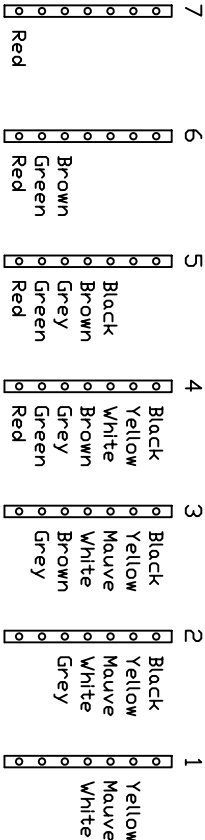
Biscuits number right to left (1 to 85)
Keys number left to right (1 to 49)
White only connected to Keys 1 to 44.
Mauve only connected to Keys 1 to 37.
Percussion contacts mounted under main key contact block

Key Contacts

Key Action



Notes: G#, A, A#, B
(Biscuits 1 to 28)



		Scale	N.I.S.	Title	UPPER MANUAL - BISCUIT & KEY SCHEMATIC FOR CONTINENTAL 300 & 301	DRN.	NMD
						CHK.	
						APP.	
		TOL.	Resistors 5% Capacitors 10%			VDX THOMAS ITALIAN EME MODEL	DRG. No. 002-800-001